



Description Switch disconnecter with accessory option
 Code 90 AM Range
 No. of poles 2P
 Rated current 40 A
 AC Rated operational voltage (Ue) 415 V

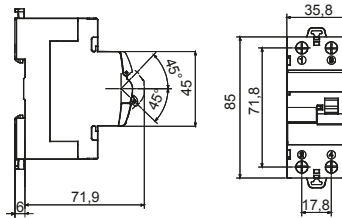
ELECTRICAL CHARACTERISTICS

Standard	EN 60947-3	Mechanical life	20.000 maneuvers
Rated insulation voltage (Ui)	500 V	Screwdriver suggested	PZ2
Rated impulse withstand voltage (Uimp)	4 kV	Rated tightening torque	3 Nm
Rated frequency (Hz)	50/60 Hz	Max rigid cable section	≤ 1x35 mm ² - ≤ 2x16 mm ² - ≤ 1x16 + 2x10 mm ²
Use category	AC-23 A	Max. section flex. cables	≤ 1x35 mm ² - ≤ 2x16 mm ² - ≤ 1x16 + 2x10 mm ²
Rated short-time withstand current for 1s (Icw)	800 A	IP degree	IP20
Power dissipation per pole	2,8 W	Working temperature	-25°C ÷ +60°C
Electrical endurance	5.000 maneuvers	Tropicalization	55°C - UR 95%

MECHANICAL CHARACTERISTICS

-	-	Upline/downline power supply	Yes
-	-	Biconnection (cable + fork combs)	Yes (upstream and downstream)
-	-	Lockable	Yes, with GW96041

DIMENSIONAL



STANDARDS/APPROVALS



GEWISS S.p.A. Via A. Volta, 1
 24069 Cenate Sotto - Bergamo - Italy
 tel. +39 035 94 61 11 fax +39 035 94 69 09
 Company subject to the management and
 coordination of Polifin S.p.A.

www.gewiss.com
 sat@gewiss.com
 Last update 15/04/2026

Data, measures, designs and pictures are shown
 only as informative purposes,
 and could be changed without previous notice