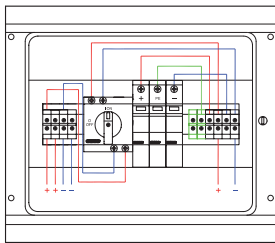


## PRODUCTS FOR PHOTOVOLTAIC SYSTEM

### 90 PV range - String boards

#### 2 STRINGS - 600V DC - 25A GW D9901



Pre-wired board for connecting 1 or 2 strings of photovoltaic panels to the inverter. It includes:

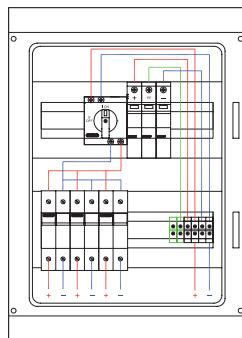
- watertight enclosure
- 1 rotary switch disconnecter 2-pole
- 1 surge protective device with extractable cartridges

#### TECHNICAL DATA

Standards:	EN 61439-1 and EN 61439-2
No. of modules of 40CDK enclosure:	1x12
Degree of protection:	IP65
Insulation class:	Class II
Rated voltage of the switch disconnecter (Ue):	600V dc
Rated current of the switch disconnecter (In):	25A
Rated operational voltage of the SPD (Un):	600V dc
Connection cable section:	6mm <sup>2</sup>

**STRING BOARD EQUIPMENT:** cable glands (supplied loose) and equipotential terminal blocks.

#### 3 STRINGS - 600V DC - 25A GW D9902



Pre-wired board for connecting 3 strings of photovoltaic panels to the inverter. It includes:

- watertight enclosure
- 1 rotary switch disconnecter 2-pole
- 1 surge protective device with extractable cartridges
- 3 disconnectable fuse-holders

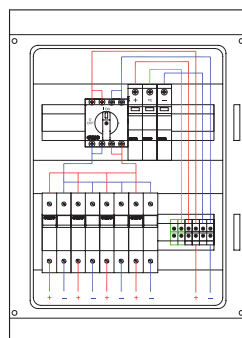
#### TECHNICAL DATA

Standards:	EN 61439-1 and EN 61439-2
No. of modules of 40CDK enclosure:	2x12
Degree of protection:	IP65
Insulation class:	Class II
Rated voltage of the switch disconnecter (Ue):	600V dc
Rated current of the switch disconnecter (In):	25A
Rated operational voltage of the SPD (Un):	600V dc
Connection cable section:	6mm <sup>2</sup>

**STRING BOARD EQUIPMENT:** cable glands (supplied loose) and equipotential terminal blocks.

NB: DC fuses not supplied.

#### 4 STRINGS - 600V DC - 50A GW D9903



Pre-wired board for connecting 4 strings of photovoltaic panels to the inverter. It includes:

- watertight enclosure
- 1 rotary switch disconnecter 4-pole
- 1 surge protective device with extractable cartridges
- 4 disconnectable fuse-holders

#### TECHNICAL DATA

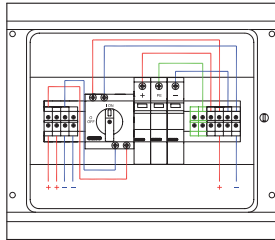
Standards:	EN 61439-1 and EN 61439-2
No. of modules of 40CDK enclosure:	2x12
Degree of protection:	IP65
Insulation class:	Class II
Rated voltage of the switch disconnecter (Ue):	600V dc
Rated current of the switch disconnecter (In):	50 A (2 poles in parallel)
Rated operational voltage of the SPD (Un):	600V dc
Connection cable section:	6mm <sup>2</sup>

**STRING BOARD EQUIPMENT:** cable glands (supplied loose) and equipotential terminal blocks.

NB: DC fuses not supplied.

## PRODUCTS FOR PHOTOVOLTAIC SYSTEM

### 2 STRINGS - 800V DC - 20A GW D9906



Pre-wired board for connecting 1 or 2 strings of photovoltaic panels to the inverter. It includes:

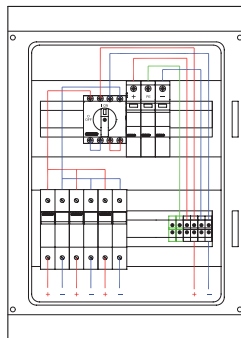
- watertight enclosure
- 1 rotary switch disconnecter 2-pole
- 1 surge protective device with extractable cartridges

#### TECHNICAL DATA

Standards:	EN 61439-1 and EN 61439-2
No. of modules of 40CDK enclosure:	1x12
Degree of protection:	IP65
Insulation class:	Class II
Rated voltage of the switch disconnecter (Ue):	800V dc
Rated current of the switch disconnecter (In):	20A
Rated operational voltage of the SPD (Un):	1000V dc
Connection cable section:	6mm <sup>2</sup>

**STRING BOARD EQUIPMENT:** cable glands (supplied loose) and equipotential terminal blocks.

### 3 STRINGS - 1000V DC - 32A GW D9907



Pre-wired board for connecting 3 strings of photovoltaic panels to the inverter. It includes:

- watertight enclosure
- 1 rotary switch disconnecter 4-pole
- 1 surge protective device with extractable cartridges
- 3 disconnectable fuse-holders

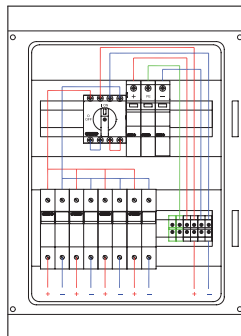
#### TECHNICAL DATA

Standards:	EN 61439-1 and EN 61439-2
No. of modules of 40CDK enclosure:	2x12
Degree of protection:	IP65
Insulation class:	Class II
Rated voltage of the switch disconnecter (Ue):	1000V dc
Rated current of the switch disconnecter (In):	32A (4 poles in series)
Rated operational voltage of the SPD (Un):	1000V dc
Connection cable section:	6mm <sup>2</sup>

**STRING BOARD EQUIPMENT:** cable glands (supplied loose) and equipotential terminal blocks.

NB: DC fuses not supplied.

### 4 STRINGS - 1000V DC - 32A GW D9908



Pre-wired board for connecting 4 strings of photovoltaic panels to the inverter. It includes:

- watertight enclosure
- 1 rotary switch disconnecter 4-pole
- 1 surge protective device with extractable cartridges
- 4 disconnectable fuse-holders

#### TECHNICAL DATA

Standards:	EN 61439-1 and EN 61439-2
No. of modules of 40CDK enclosure:	2x12
Degree of protection:	IP65
Insulation class:	Class II
Rated voltage of the switch disconnecter (Ue):	1000V dc
Rated current of the switch disconnecter (In):	32A (4 poles in series)
Rated operational voltage of the SPD (Un):	1000V dc
Connection cable section:	6mm <sup>2</sup>

**STRING BOARD EQUIPMENT:** cable glands (supplied loose) and equipotential terminal blocks.

NB: DC fuses not supplied.

## PRODUCTS FOR PHOTOVOLTAIC SYSTEM

### 90 PV RANGE - MODULAR DEVICES IN DIRECT CURRENT

#### SWITCH DISCONNECTOR



Compact dc switch disconnecter suitable for photovoltaic installation up to 32 A 1000 V dc

##### TECHNICAL DATA

Standards:	EN 60947-3
Utilization category:	DC21B / DC22B
Rated insulation voltage (Ui):	1000V
Rated impulse withstand voltage (Uimp):	8kV
Operating temperature:	-40 to +65°C
Max. cable section:	16mm <sup>2</sup> (solid or stranded) 10mm <sup>2</sup> (flexible, also with terminals)

Code	Modules	Poles	Utilization category	Rated operational voltage (Ue)		
				600V dc	800V dc	1000V dc
				Rated operational current (In)		
GW 96 186	3,5	2	DC21B	25A	20A	11A
			DC22B	6A	2,5A	1,5A
GW 96 187	3,5	4	DC21B	32A	32A	32A
			DC22B	27,5A	12,5A	10A

#### SURGE PROTECTIVE DEVICES LST



Surge protective devices with extractable cartridge suitable for photovoltaic applications up to 1000 V dc

##### TECHNICAL DATA

Standards:	EN 61643-11
Type:	Type 2 (8/20 μs)
Rated discharge current (In):	20kA
Maximum discharge current (Imax):	40kA
Back-up protection:	if Icc > 100A dc, fuse type gPV ≤ 20A if Icc < 100A dc, protection not necessary

Code	Rated operational voltage (Un)	Maximum continuous operating voltage (Uc)	Voltage protection level at In (Up)	Modules
GW D6 426	600V dc	700V dc	≤ 2,6kV	3
GW D6 428	1000V dc	1170V dc	≤ 4kV	3

#### SPARE CARTRIDGES

- GW D6 446 suitable for SPD GW D6 426.
- GW D6 448 suitable for SPD GW D6 428.

#### DISCONNECTABLE FUSE-HOLDER



Fuse-holder for protection and isolation of the photovoltaic strings.

##### TECHNICAL DATA

Standards:	EN 60947-3
Utilization category:	DC20B
Rated operational voltage (Ue):	1000V dc
Rated current (In):	20A
Max power loss:	3W

Code	Poles	Modules
GW 96 226	1	1
GW 96 227	2	2

#### FUSES

The fuses are type Gpv, as required for photovoltaic applications.



##### TECHNICAL DATA

Standards:	IEC 60269-6
Dimensions:	10,3x38 mm
Type:	gPV
Rated operational voltage (Ue):	1000V dc
Breaking capacity:	30kA dc

Code	Rated current (In)
GW 72 131	6
GW 72 132	8
GW 72 133	10
GW 72 134	12
GW 72 135	16
GW 72 136	20

For technical information contact the Technical Assistance Service or visit [gewiss.com](http://gewiss.com)