



Description Switch disconnecter
 Code 90 AM Range
 No. of poles 3P
 Rated current 63 A
 AC Rated operational voltage (Ue) 415 V

ELECTRICAL CHARACTERISTICS

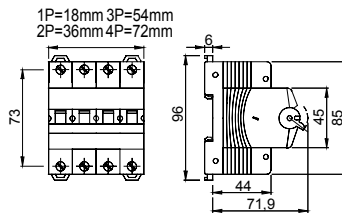
| | |
|---|-----------------|
| Standard | EN 60947-3 |
| Rated insulation voltage (Ui) | 500 V |
| Rated impulse withstand voltage (Uimp) | 4 kV |
| Rated frequency (Hz) | 50/60 Hz |
| Use category | AC-23B |
| Rated short-time withstand current for 1s (Icw) | 756 A |
| Power dissipation per pole | 2 W |
| Electrical endurance | 5.000 maneuvers |

MECHANICAL CHARACTERISTICS

| | |
|---------------------------|---|
| Mechanical life | 20.000 maneuvers |
| Screwdriver suggested | PZ2 |
| Rated tightening torque | 2 Nm |
| Max rigid cable section | ≤ 1x35 mm ² - ≤ 2x16 mm ² - ≤ 1x16 + 2x10 mm ² |
| Max. section flex. cables | ≤ 1x35 mm ² - ≤ 2x16 mm ² - ≤ 1x16 + 2x10 mm ² |
| IP degree | IP20 |
| Working temperature | -5°C ÷ +40°C |
| Tropicalization | 55°C - UR 95% |

| | | |
|---|-------------------------------------|-----------------------|
| - | - Upline/downline power supply | Yes |
| - | - Biconnection (cable + fork combs) | Yes (downstream only) |
| - | - Lockable | No |

DIMENSIONAL



STANDARDS/APPROVALS

