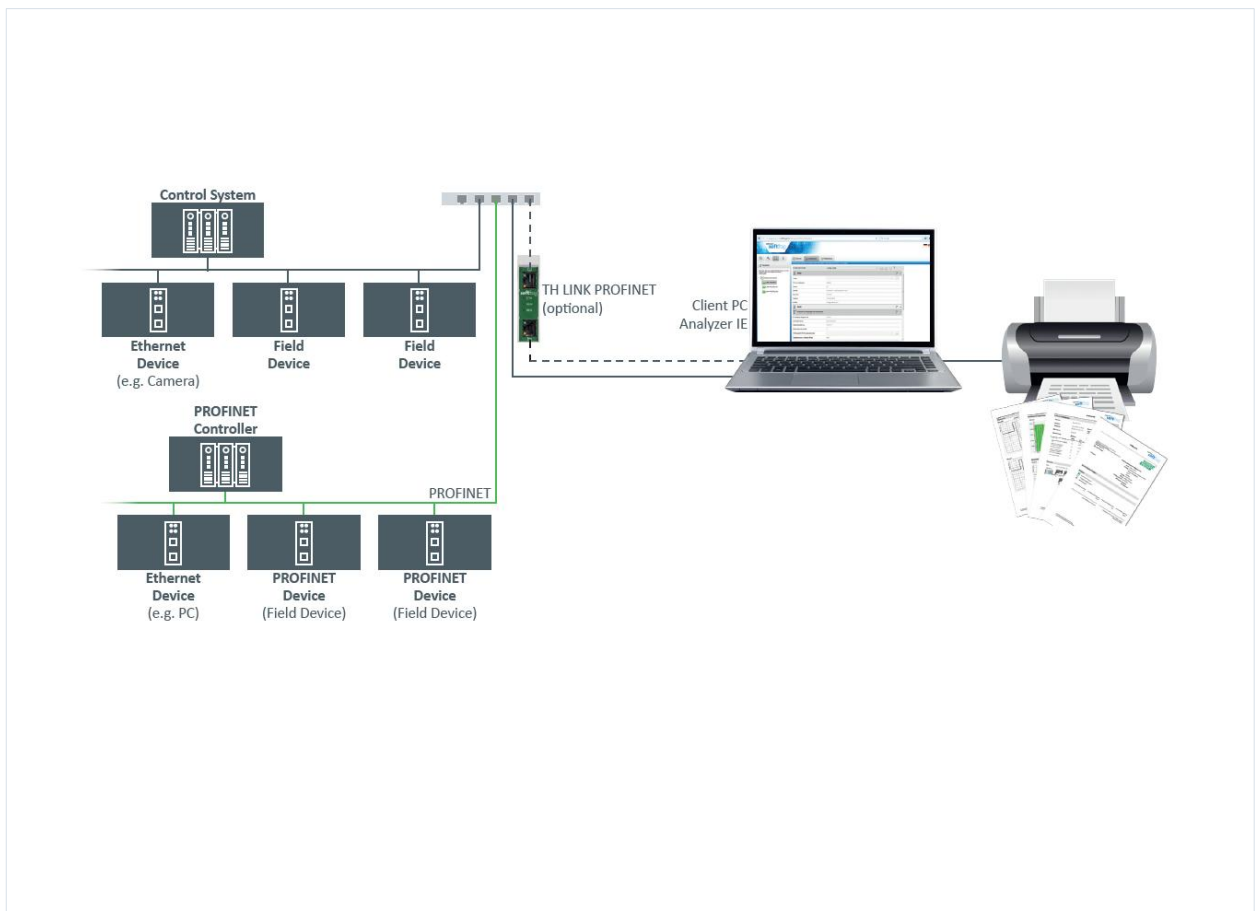


Installation Manual

dataCHECK Analyzer IE



Version: EN-072017-3.40

© Copyright 2014 - 2017 Softing Industrial Automation GmbH




Disclaimer of liability


The information contained in these instructions corresponds to the technical status at the time of printing of it and is passed on with the best of our knowledge. The information in these instructions is in no event a basis for warranty claims or contractual agreements concerning the described products, and may especially not be deemed as warranty concerning the quality and durability pursuant to Sec. 443 German Civil Code. We reserve the right to make any alterations or improvements to these instructions without prior notice. The actual design of products may deviate from the information contained in the instructions if technical alterations and product improvements so require.


It may not, in part or in its entirety, be reproduced, copied, or transferred into electronic media.


Softing Industrial Automation GmbH

Richard-Reitzner-Allee 6
85540 Haar / Germany
<http://industrial.softing.com>

 + 49 89 4 56 56-0

 + 49 89 4 56 56-488

 info.automation@softing.com

 support.automation@softing.com

The latest version of this manual is available in the Softing download area at: <http://industrial.softing.com/en/downloads.html>

Table of Contents

Chapter 1	Introduction.....	5
1.1	About dataCHECK Analyzer IE.....	5
1.2	Before you start.....	5
1.3	Short instructions.....	5
1.4	Scope of delivery.....	5
Chapter 2	Install dataCHECK Analyzer IE.....	6
2.1	Start installation.....	6
2.2	Install TH SCOPE component.....	7
2.3	Install TH LINK component.....	10
2.4	Complete installation.....	12
Chapter 3	Licensing.....	13
3.1	Licensing on PC.....	13
3.2	Licensing on USB-Dongle.....	13
Chapter 4	Start dataCHECK Analyzer IE.....	14

This page is intentionally left blank.

1 Introduction

1.1 About dataCHECK Analyzer IE

dataCHECK Analyzer IE is a software for mobile diagnosis of PROFINET-, EtherNet/IP- and Modbus TCP networks.

It allows for efficiently processing network acceptance tests as well as for automatically creating acceptance reports. In addition it provides comprehensive possibilities for network analysis, for example in urgent error cases.



User manual and documentation

dataCHECK Analyzer IE consists of the software components TH LINK PC and TH SCOPE. User manuals and release notes for those products are available for download on the softing website.

1.2 Before you start



Read this manual before starting

Before you start with the installation read this Installation Manual. It will help you with your system setup and provides essential information. The Installation Manual leads you step by step through the installation.

For damages due to improper connection, implementation or operation Softing refuses any liability according to our existing guarantee obligations.

1.3 Short instructions

1. Make sure the system requirements are met (see System requirements).
2. Install if necessary the Internet Information Services (see Installation of Microsoft Internet Information Services (IIS)).
3. Install dataCHECK Analyzer IE (see [Install dataCHECK Analyzer IE](#)).
4. License dataCHECK Analyzer IE (see [Licensing](#)).
5. Start dataCHECK Analyzer IE (see [Start dataCHECK Analyzer IE](#)).

1.4 Scope of delivery

dataCHECK Analyzer IE includes

- dataCHECK Analyzer IE installation
- Installation Manual
- TH SCOPE User Manual

You can find software and documentation in our download area at <http://industrial.softing.com/en/downloads.html>.

2 Install dataCHECK Analyzer IE



Note

Make sure that all System requirements are met.

2.1 Start installation

1. Start the installation:
 - a. for 64 bit systems by double-clicking file *BC_Analyzer_IE64.exe*
 - b. for 32 bit systems by double-clicking file *BC_Analyzer_IE64.exe*



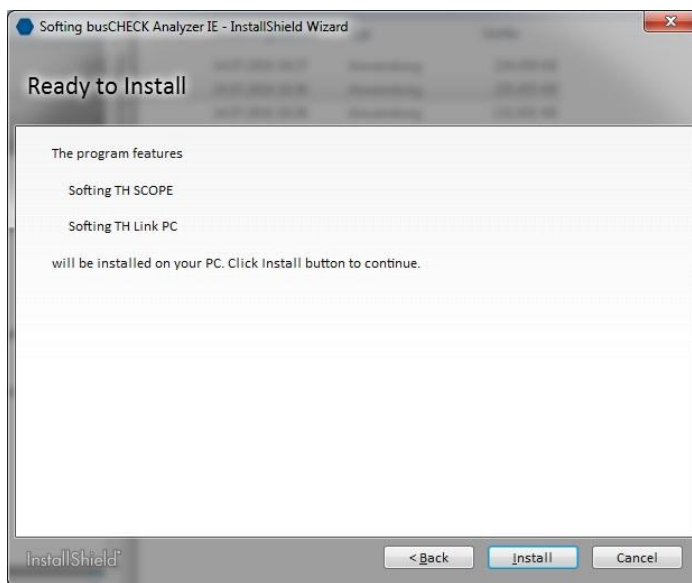
Note

If you install a Softing product for the first time, a window is opened that prompts you to trust the publisher. Activate the option **Always trust software from Softing AG**, if you do not want to be asked in subsequent installations. Then select **[Install]** to start the installation.

2. The main installation window appears:



3. Click **[Next]** to continue:



4. Click **[Install]** to start the installation.
5. The TH SCOPE installation is started - see [Install TH SCOPE](#).

2.2 Install TH SCOPE component

1. Select your installation language and click **[OK]**.
2. Depending on your Microsoft IIS configuration on your PC you are prompted to configure IIS. Confirm with **[Yes]**.
3. The **Welcome screen** appears:



- Click **[Next]**, to install TH SCOPE on your system. The **license agreement** screen appears:



- Carefully read the information. Click **I accept the terms in the license agreement**. Then click **[Next]**.
- The **Destination Folder** appears:



- Click **[Next]** to install in the folder currently displayed or click **[Change]** to install in a different folder.

8. The installation screen appears:



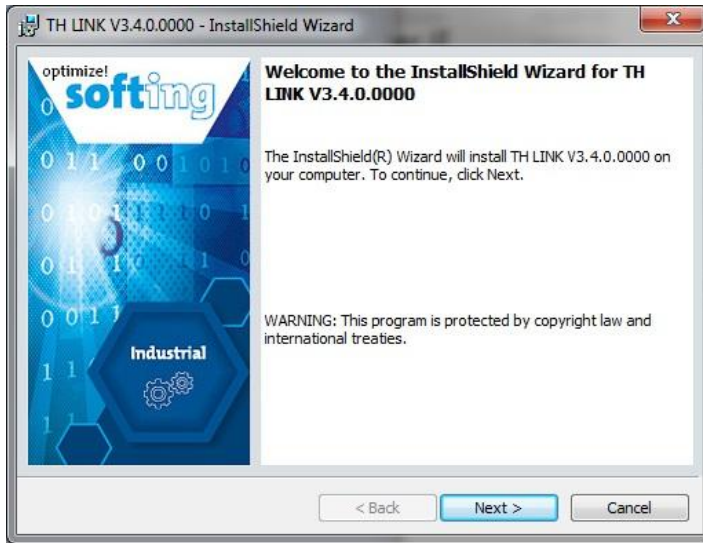
9. Click **[Install]** to start the installation. If you want to review or change any of your installation settings, click **[Back]**.
10. The progress of the installation procedure is displayed in a status bar.
11. The completion screen appears:



12. Click **[Finish]** to complete the TH SCOPE installation and to exit the wizard.
13. The TH LINK installation is started - see [Install TH LINK](#).

2.3 Install TH LINK component

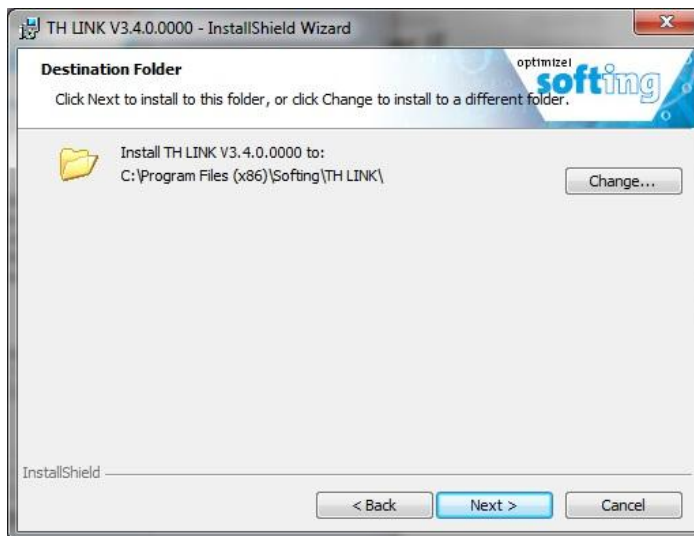
1. Select your installation language and click **[OK]**. The **Welcome screen** appears:



2. Click **[Next]**, to install TH LINK on your system. The **license agreement** screen appears:

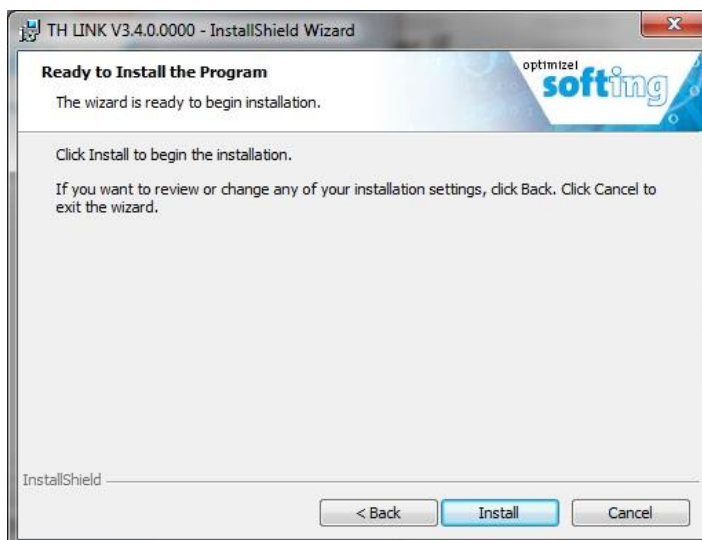


3. Carefully read the information. Click **I accept the terms in the license agreement**. Then click **[Next]**.

4. The **Destination Folder** appears:

5. Click **[Next]** to install in the folder currently displayed or click **[Change]** to install in a different folder.

6. The installation screen appears:



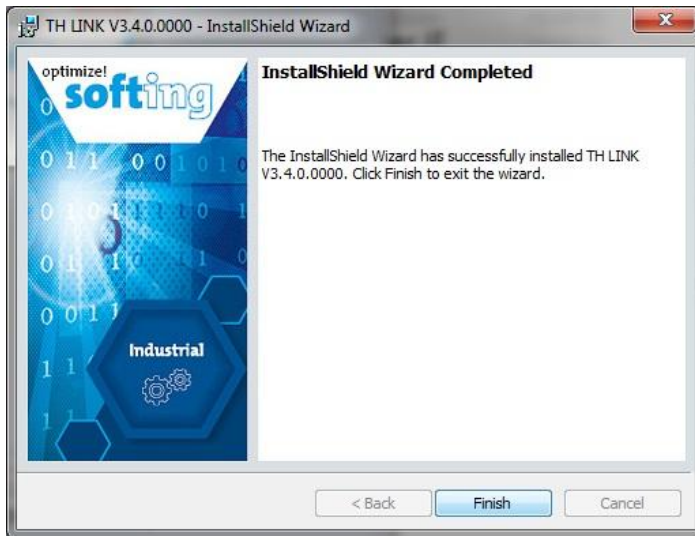
7. Click **[Install]** to start the installation. If you want to review or change any of your installation settings, click **[Back]**.

8. The progress of the installation procedure is displayed in a status bar.

**Windows Server 2008 installation**

If you install dataCHECK Analyzer IE under Windows Server 2008, a safety note may be displayed explaining that Windows cannot verify the publisher of the driver software. Allow the installation program to install the driver nevertheless.

9. The completion screen appears:



10. Click **[Finish]** to complete the TH LINK installation and to exit the wizard.

2.4 Complete installation

1. After having installed TH SCOPE and TH LINK, switch back to the main installation screen.
2. Click **[Finish]** to complete the installation.



3 Licensing

3.1 Licensing on PC

3.2 Licensing on USB-Dongle



Online help

The License Manager includes an online help, which gives you detailed information about the licensing procedure and helps you to solve possible problems. Click in the left part of the License Manager user interface on **[Help]** and select the corresponding topic.

Licensing on PC - with internet access

1. Start the License Manager with **Start → All Programs → Softing License Manager → License Manager V4**.
2. Select **Activate for this PC**.
3. Enter your license key in the following format: XXXXX-XXXXX-XXXXX-XXXXX into the field **License Key**.
4. Click **[Activate license]**.
5. After a successful activation your license is displayed in the list **Available licenses on this PC**.

Licensing on PC - without internet access

1. Start the License Manager on the PC where you want to use the license. Select **Start → All Program → Softing License Manager → License Manager V4**.
2. Select **Activate for this PC**.
3. Click **Export PC-Is...**
4. Select your PC and click **[OK]** in order to save the file.
5. Transfer this file to a PC with internet access and License Manager installed in the current version.
6. Start the License Manager. Switch to **Generate license file for remote PC**. Enter the license key. Click **Import PC-Id from remote PC...**
7. Select **Generate and export license file... .**
8. Save this file and transfer the file to the original PC.
9. Select **Activate for this PC**.
10. Click **[Import license file]** and import the file.
11. Then click **[Activate license]**.
12. After a successful activation your license is displayed in the list **Available licenses on this PC**.

4 Start dataCHECK Analyzer IE

Before you start

- make sure the PC on that <%SHORTNAME%> is installed is located in a network and
- the browser you are using is installed on that PC on which <%SHORTNAME%> is installed.

Start as follows:

1. Open the Windows start menu.
2. Select **All Programs** → **Softing** → **TH SCOPE**.
3. Then click **TH SCOPE**:

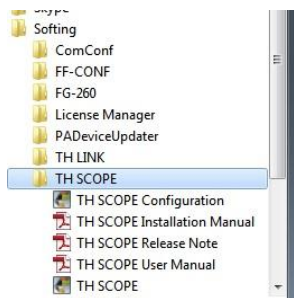


Figure 1: TH SCOPE start menu

4. The default browser on your PC opens with the following website:

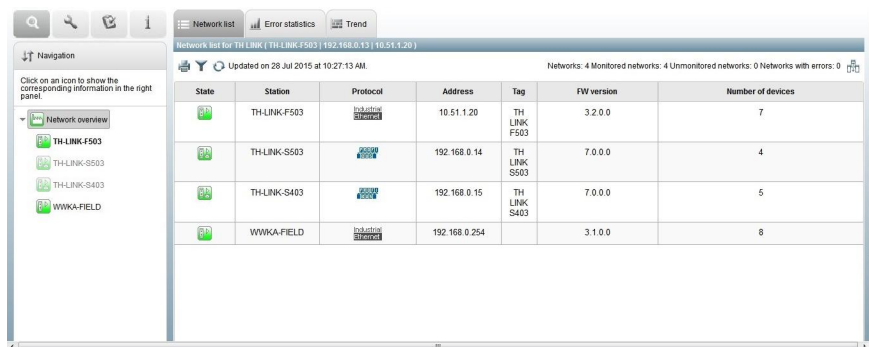


Figure 2: Start page






Note

If TH SCOPE does not find stations, additional settings may be required. Refer to the User Manual of dataCHECK Analyzer IE for more information.

Softing Industrial Automation GmbH

Richard-Reitzner-Allee 6
85540 Haar / Germany
<http://industrial.softing.com>

 Tel: + 49 89 45 656-0
 Fax: + 49 89 45 656-488
 info.automation@softing.com